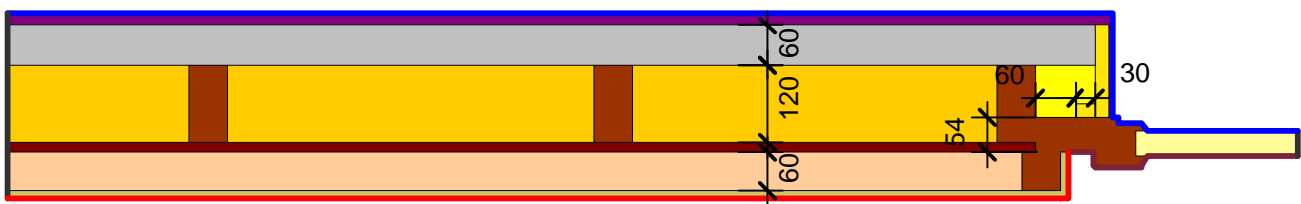
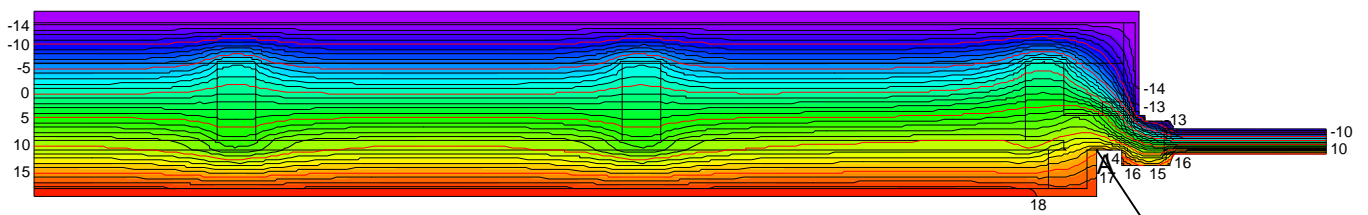


Detailblatt 24-922
 Dämmung Wand 24-120: 60 + 120 + 60mm
 Kriterium Oberflächenkondensat



Material	λ [W/(m·K)]	Randbedingung	q [W/m ²]	θ [°C]	R [(m ² ·K)/W]	ϵ
Aussenputz	0.870	Aussen Standard		-14.600	0.040	
Fichte, Tanne	0.140	Innen Fenster/Türen		20.000	0.150	
Gips	0.400	Innen Untere Raumhälfte		20.000	0.350	
Holzspanplatte 600	0.110	Symmetrie/Bauteilschnitt	0.000			
ISOVER ISOCONFORT 032	0.032					
ISOVER ISOPONTE	0.032					
ISOVER PB M 032	0.032					
ISOVER SPARRENPLATTE 032 PR	0.032					
Maske	0.035					
Polystyrol expandiert	0.040					
Unbelüftete Hohlräume	Eps=0.9/0.9					

ISOVER Bautechnik, August 2013



$$\theta_{si \min}_A = 14.50 \text{ } ^\circ\text{C}$$

$$f_{Rsi} = 0.841$$

$$\varphi_{si(50\%)} = 71\%$$

$$\varphi_{100\%} = 71\%$$

