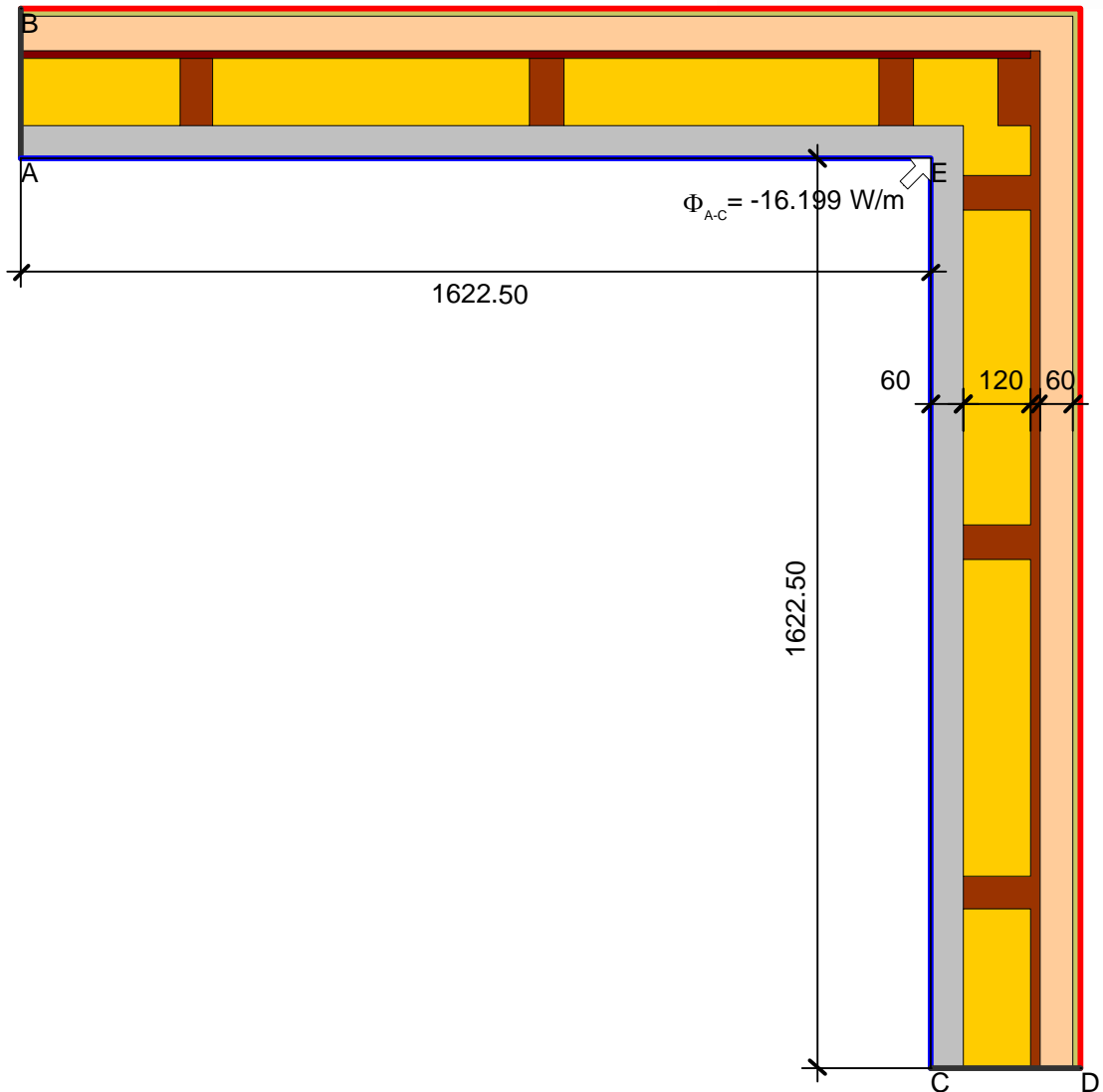


Detailblatt 24-915
 Dämmung Wand 24-110: 60 + 120 + 60mm
 Psi-Wert

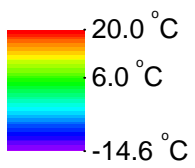
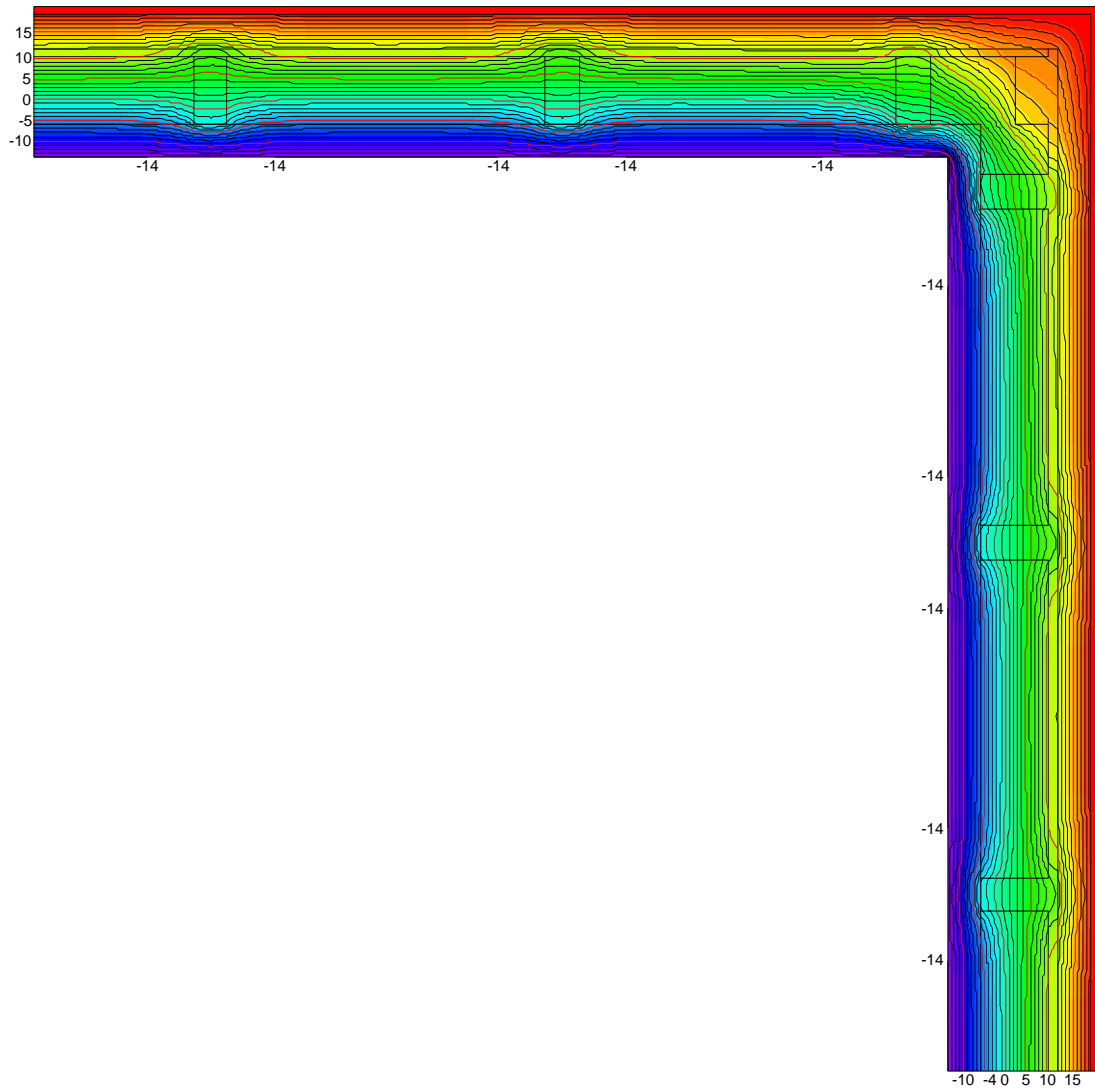


$$\Psi_{A-E,C,*} = \frac{\Phi}{\Delta T} - U_1 \cdot b_1 - U_2 \cdot b_2 = \frac{16.199}{34.600} - 0.150 \cdot 1.623 - 0.150 \cdot 1.623 = -0.02 \text{ W/(m}\cdot\text{K)}$$

Material	λ [W/(m·K)]	Randbedingung	q [W/m ²]	θ [°C]	R [(m ² ·K)/W]	ϵ
Fichte, Tanne	0.140	Aussen stark belüftet	-14.600	-14.600	0.130	
Gips	0.400	Innen Standard	20.000	20.000	0.130	
Holzspanplatte 600	0.110	Symmetrie/Bauteilschnitt	0.000	0.000	0.000	
ISOVER ISOPONTE	0.032					
ISOVER PB M 032	0.032					
ISOVER SPARRENPLATTE 032 PR	0.032					

ISOVER Bautechnik, November 2013

Detailblatt 24-915
Dämmung Wand 24-110: 60 + 120 + 60mm
Psi-Wert



ISOVER Bautechnik, November 2013