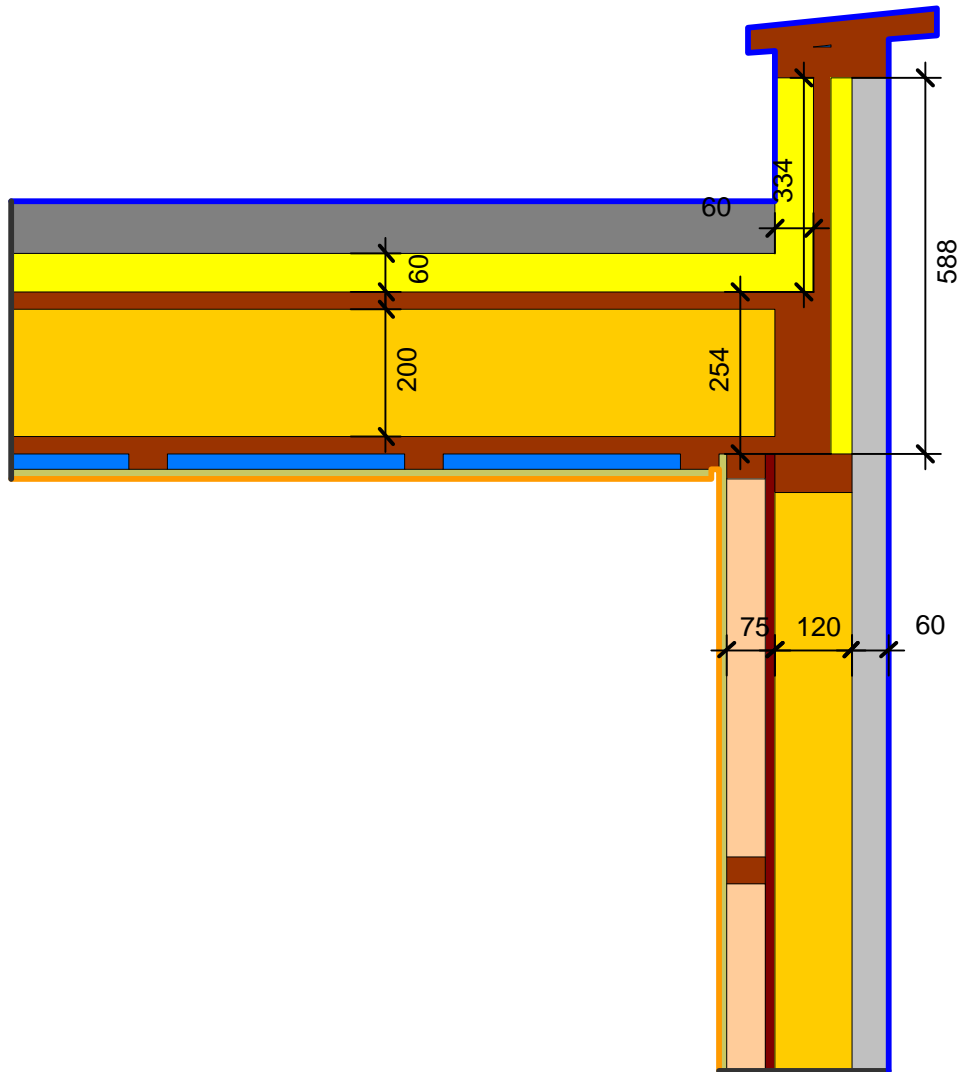


Detailblatt 13-905
 Dämmung Dach 13-500: 60 + 200mm
 Dämmung Wand 24-110: 60 + 120 + 60mm
 Kriterium Schimmel

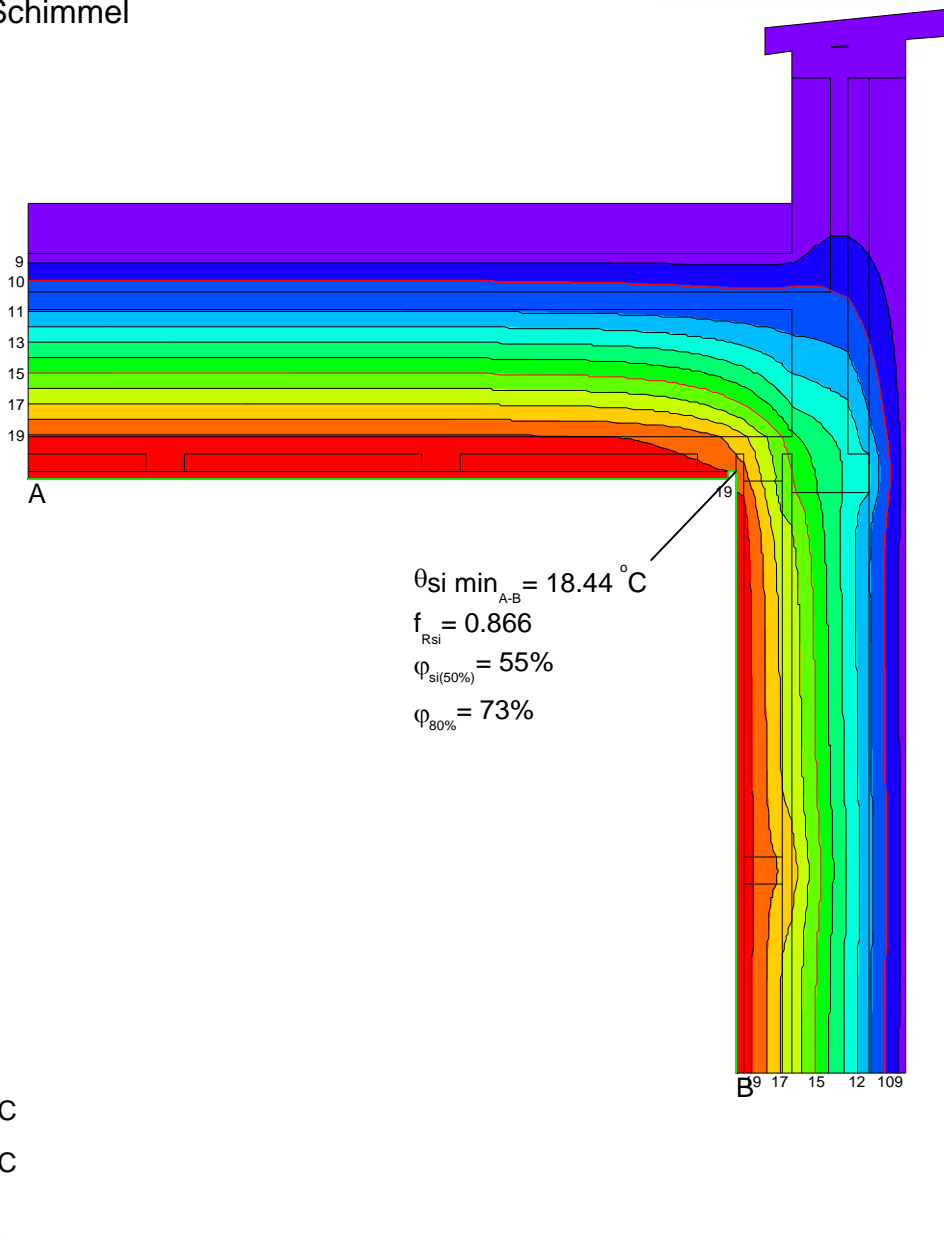


Material	λ [W/(m·K)]
Fichte, Tanne	0.140
Gips	0.400
Holzspanplatte 600	0.110
ISOVER ISOFLAT	0.038
ISOVER ISOPONTE	0.032
ISOVER ISOTWIN	0.032
ISOVER PB M 035	0.035
ISOVER SPARRENPLATTE 032 PR	0.032
Sand und Kies	2.000
Unbelüftete Hohlräume	Eps=0.9/0.9

Randbedingung	q [W/m ²]	θ [°C]	R [(m ² ·K)/W]	ϵ
Aussenklima		8.400		0.040
Innen Obere Raumhälfte		20.000		0.250
Symmetrie/Bauteilschnitt	0.000			

ISOVER Bautechnik, November 2013

Detailblatt 13-905
 Dämmung Dach 13-500: 60 + 200mm
 Dämmung Wand 24-110: 60 + 120 + 60mm
 Kriterium Schimmel



ISOVER Bautechnik, November 2013