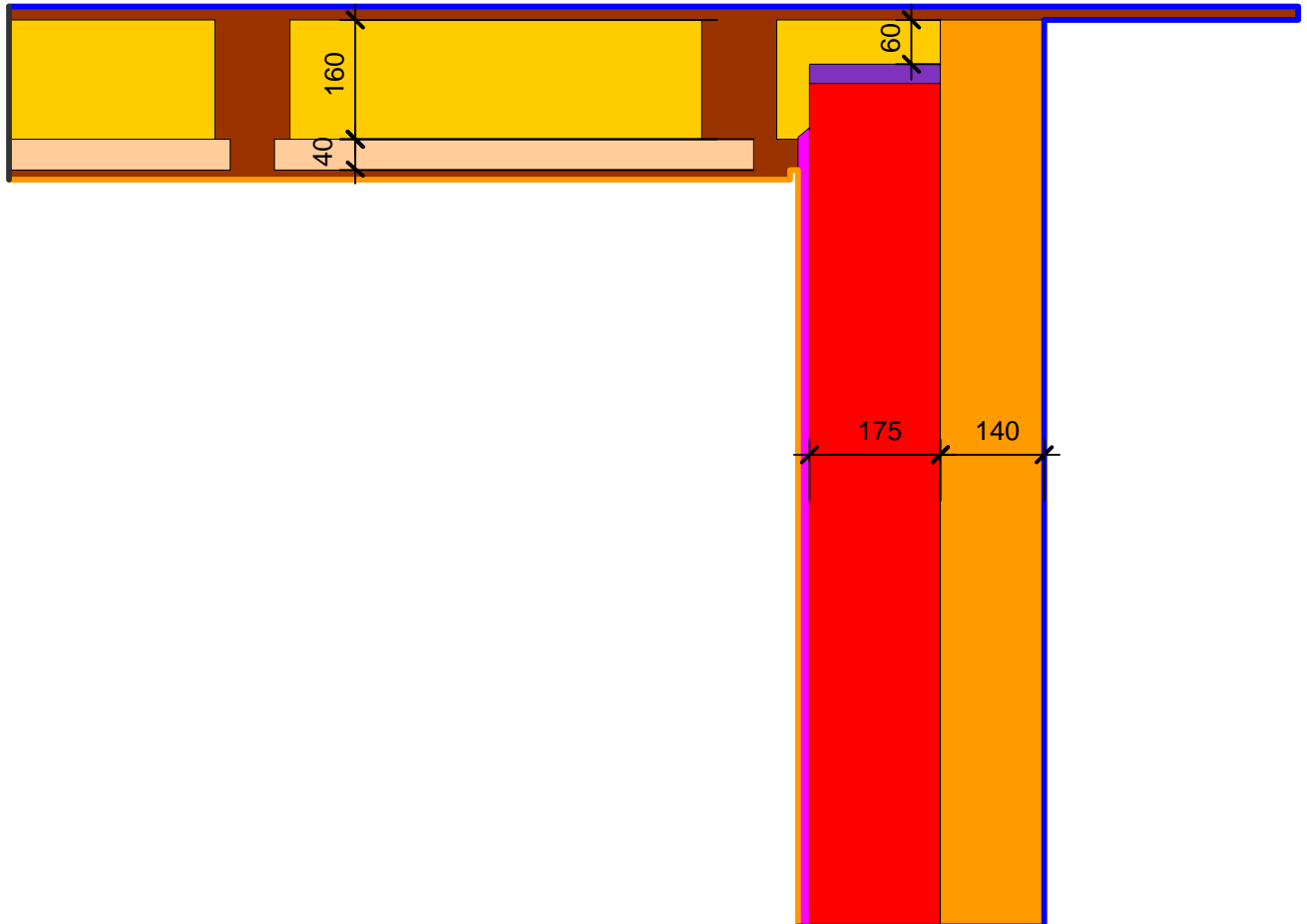


Detailblatt 21-900  
 Dämmung Dach 11-220: 160 + 40mm  
 Dämmung Wand 21-100: 140mm  
 Kriterium Oberflächenkondensat

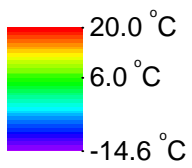
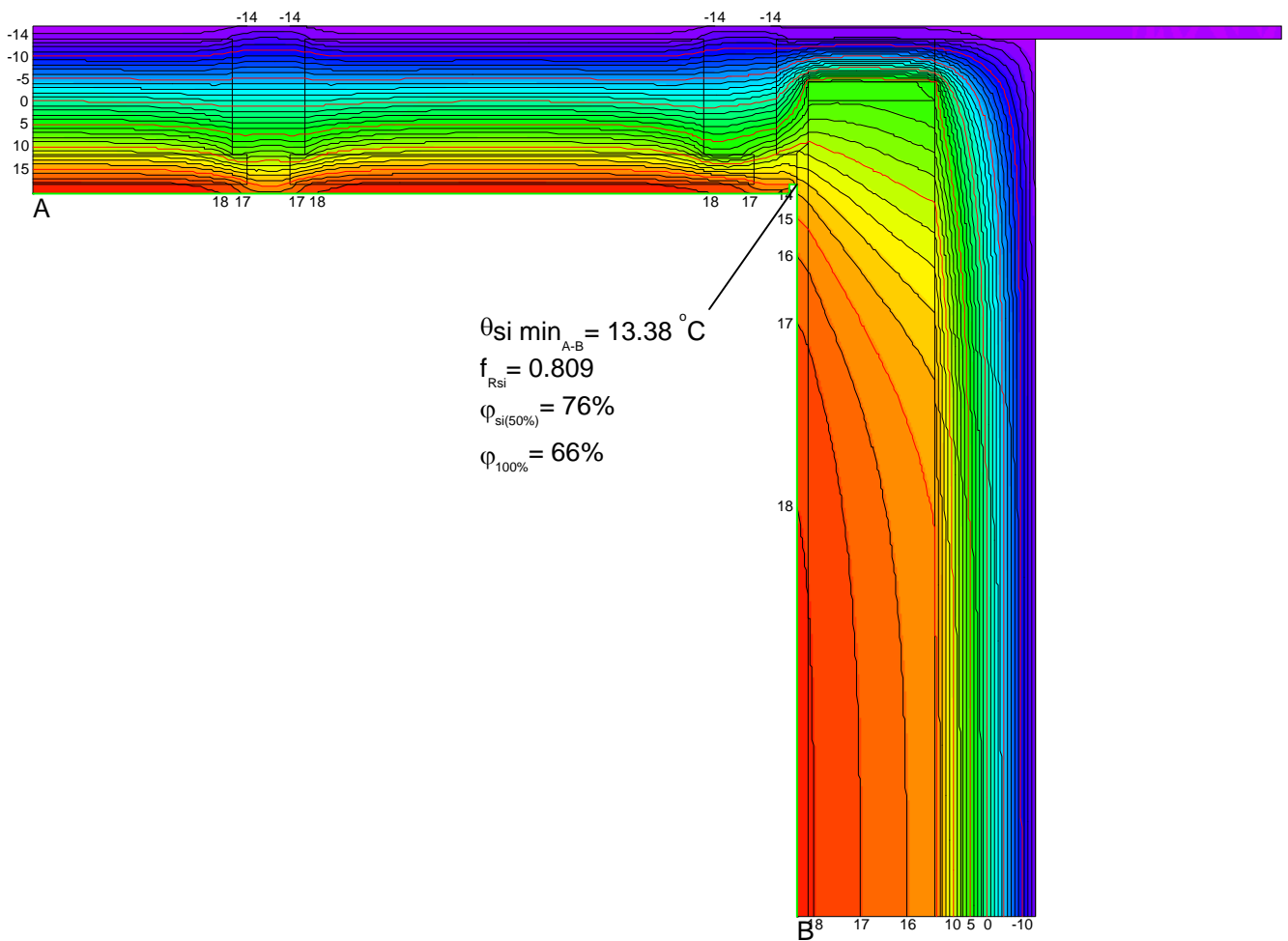


Material	$\lambda$ [W/(m·K)]
Fichte, Tanne	0.140
ISOVER PB M 032	0.032
ISOVER PHONEIX 032	0.032
ISOVER SPARRENPLATTE 032 PR	0.032
Innenputz	0.700
Modulbackstein Einstein	0.440
Zementmörtel (1)	1.400

Randbedingung	$q$ [W/m <sup>2</sup> ]	$\theta$ [°C]	$R$ [(m <sup>2</sup> ·K)/W]	$\varepsilon$
Aussenklima	-14.600		0.040	
Innen Obere Raumhälfte		20.000	0.250	
Symmetrie/Bauteilschnitt	0.000			

ISOVER Bautechnik, November 2013

Detailblatt 21-900  
Dämmung Dach 11-220: 160 + 40mm  
Dämmung Wand 21-100: 140mm  
Kriterium Oberflächenkondensat



ISOVER Bautechnik, November 2013