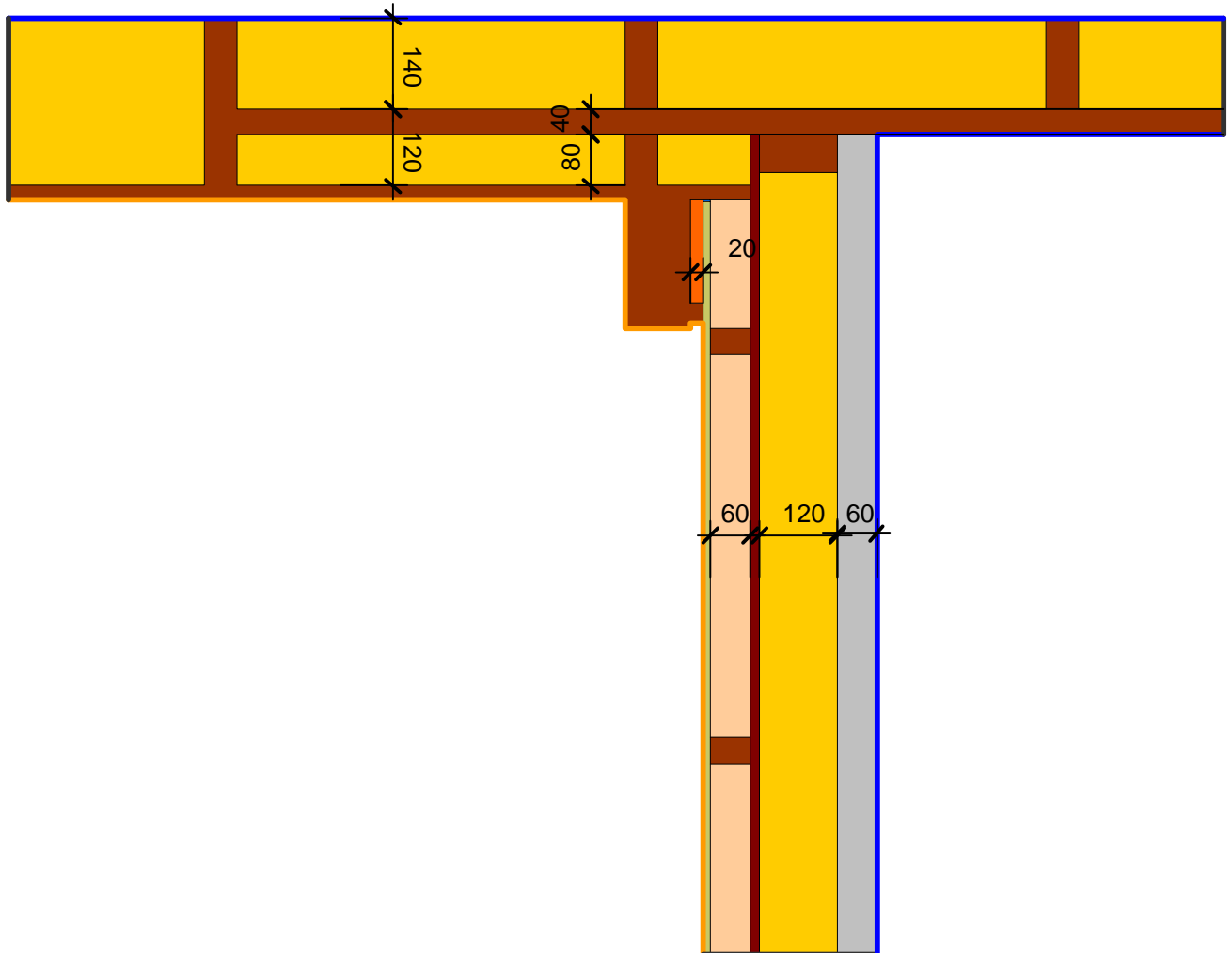


Detailblatt 12-955-v2
 Dämmung Dach 12-300: 120 + 140mm
 Dämmung Wand 24-110: 60 + 120 + 60mm
 Kriterium Oberflächenkondensat

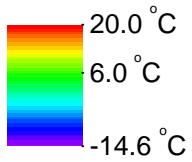
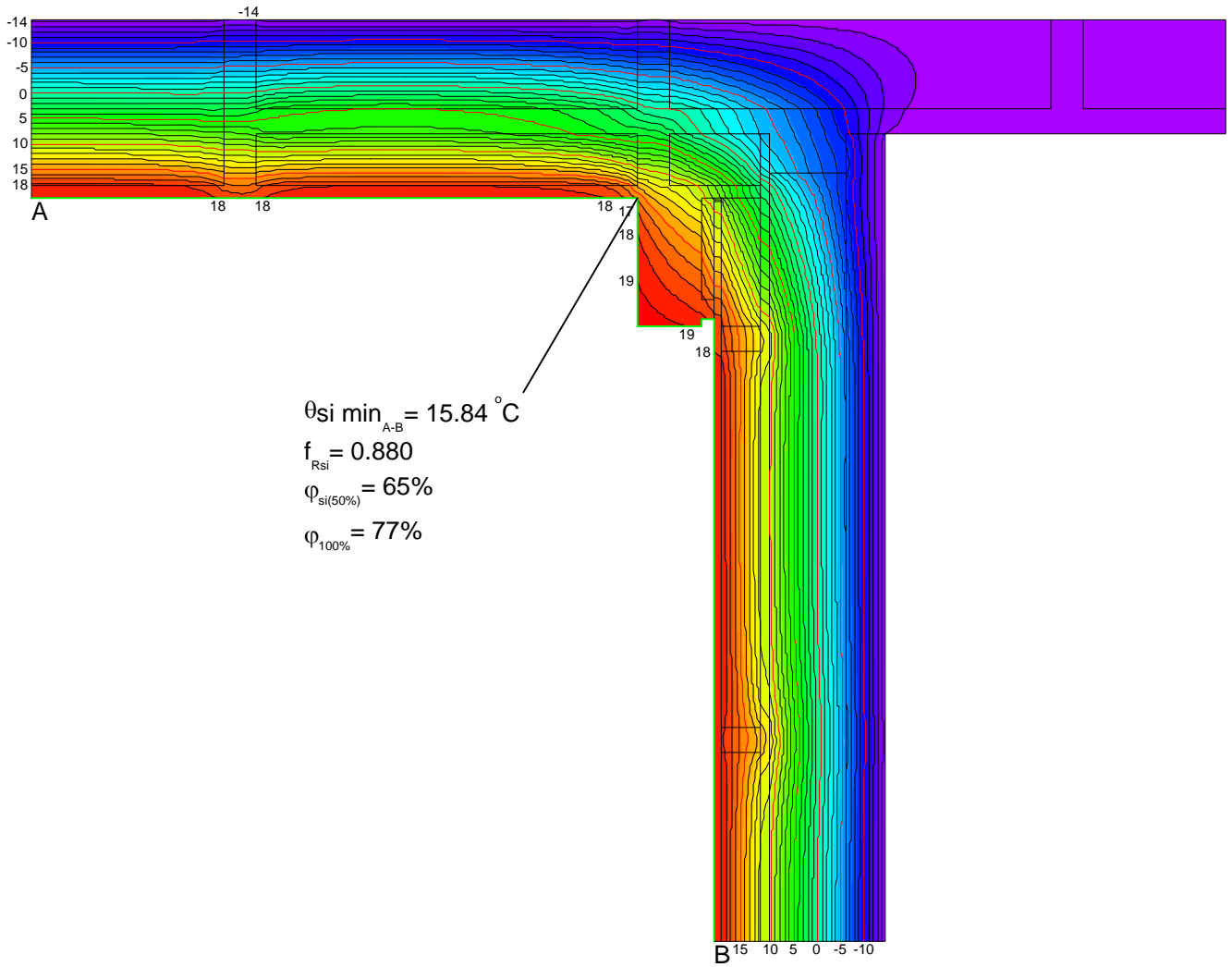


| Material | λ [W/(m·K)] |
|-----------------------------|---------------------|
| Fichte, Tanne | 0.140 |
| Gips | 0.400 |
| Holzspanplatte 600 | 0.110 |
| ISOVER ISOLENE P | 0.032 |
| ISOVER ISOPONTE | 0.032 |
| ISOVER ISOTHERM 035 | 0.035 |
| ISOVER PB M 032 | 0.032 |
| ISOVER SPARRENPLATTE 032 PR | 0.032 |
| Unbelüftete Hohlräume | Eps=0.9/0.9 |

| Randbedingung | q [W/m ²] | θ [°C] | R [(m ² ·K)/W] | ϵ |
|--------------------------|-------------------------|---------------|-----------------------------|------------|
| Aussenklima | -14.600 | | 0.040 | |
| Innen Obere Raumhälfte | 20.000 | | 0.250 | |
| Symmetrie/Bauteilschnitt | 0.000 | | | |

ISOVER Bautechnik, November 2013

Detailblatt 12-955-v2
 Dämmung Dach 12-300: 120 + 140mm
 Dämmung Wand 24-110: 60 + 120 + 60mm
 Kriterium Oberflächenkondensat



ISOVER Bautechnik, November 2013