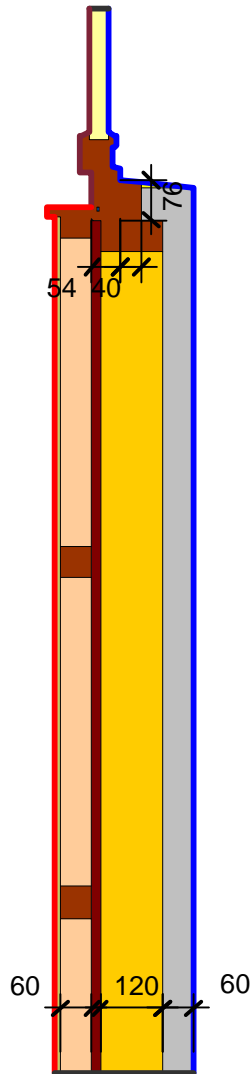


Detailblatt 24-925  
 Dämmung Wand 24-110: 60 + 120 + 60mm  
 Kriterium Oberflächenkondensat



Material	$\lambda$ [W/(m·K)]	Randbedingung	$q$ [W/m <sup>2</sup> ]	$\theta$ [°C]	$R$ [(m <sup>2</sup> ·K)/W]	$\epsilon$
Fichte, Tanne	0.140	Aussen Standard	-14.600		0.040	
Gips	0.400	Innen Fenster/Türen	20.000	0.150		
Holzspanplatte 600	0.110	Innen Untere Raumhälfte	20.000	0.350		
ISOVER ISOCONFORT 032	0.032	Symmetrie/Bauteilschnitt	0.000			
ISOVER ISOLENE P	0.032					
ISOVER ISOPONTE	0.032					
ISOVER SPARRENPLATTE 032 PR	0.032					
Maske	0.035					
Unbelüftete Hohlräume	Eps=0.9/0.9					

ISOVER Bautechnik, August 2013

Detailblatt 24-925  
Dämmung Wand 24-110: 60 + 120 + 60mm  
Kriterium Oberflächenkondensat

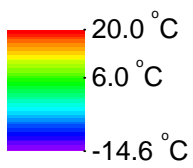
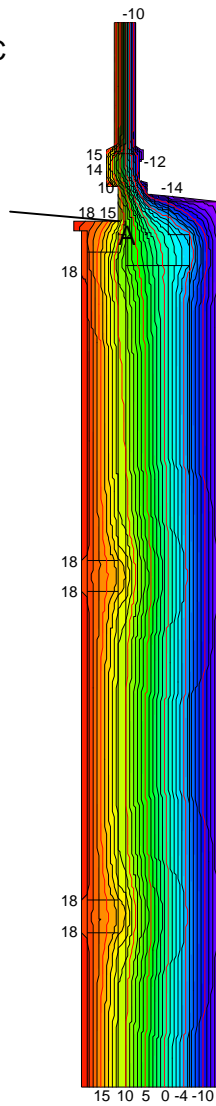


$$\theta_{si \min}_A = 12.29 \text{ } ^\circ\text{C}$$

$$f_{Rsi} = 0.777$$

$$\varphi_{si(50\%)} = 82\%$$

$$\varphi_{100\%} = 61\%$$



ISOVER Bautechnik, August 2013