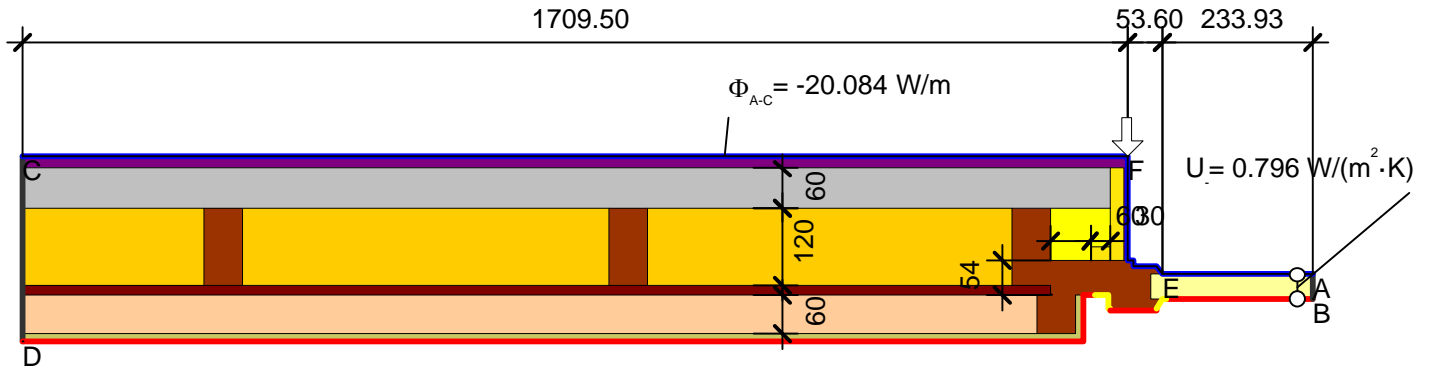


Detailblatt 24-922
 Dämmung Wand 24-120: 60 + 120 + 60mm
 Kriterium Psi-Wert

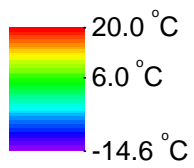
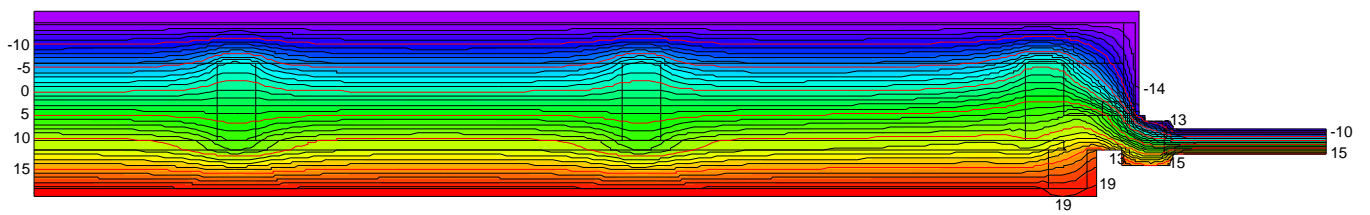


$$\psi_{A-F-C, \cdot} = \frac{\Phi}{\Delta T} - U_1 \cdot b_1 - U_2 \cdot b_2 - U_3 \cdot b_3 = \frac{20.084}{34.600} - 0.796 \cdot 0.234 - 0.150 \cdot 1.710 - 1.400 \cdot 0.054 = 0.06 \text{ W/(m}\cdot\text{K)}$$

Material	λ [W/(m·K)]	Randbedingung	q [W/m ²]	θ [°C]	R [(m ² ·K)/W]	ϵ
Aussenputz	0.870	Aussen Standard		-14.600	0.040	
Fichte, Tanne	0.140	Innen Fensterrahmen Reduziert		20.000	0.200	
Gips	0.400	Innen Fensterrahmen Standard		20.000	0.130	
Holzspanplatte 600	0.110	Innen Standard		20.000	0.130	
ISOVER ISOCONFORT 032	0.032	Symmetrie/Bauteilschnitt	0.000			
ISOVER ISOPONTE	0.032					
ISOVER PB M 032	0.032					
ISOVER SPARRENPLATTE 032 PR	0.032					
Maske	0.035					
Polystyrol expandiert	0.040					
Unbelüftete Hohlräume	Eps=0.9/0.9					

ISOVER Bautechnik, August 2013

Detailblatt 24-922
Dämmung Wand 24-120: 60 + 120 + 60mm
Kriterium Psi-Wert



ISOVER Bautechnik, August 2013