

Detailblatt 21-920  
 Dämmung Wand 21-100: 140mm  
 Kriterium Oberflächenkondensat

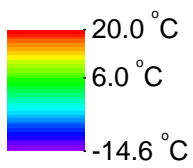
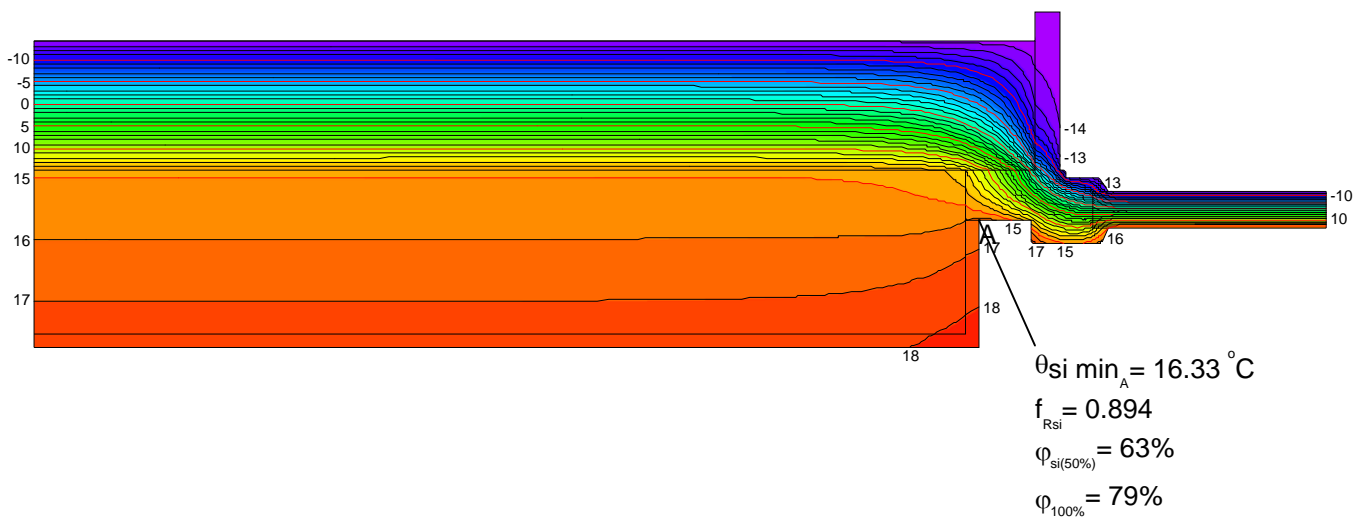


| Material                | $\lambda$ [W/(m·K)] |
|-------------------------|---------------------|
| Fichte, Tanne           | 0.140               |
| ISOVER PHONEIX 032      | 0.032               |
| Innenputz               | 0.700               |
| Maske                   | 0.035               |
| Modulbackstein Einstein | 0.440               |
| Unbelüftete Hohlräume   | Eps=0.9/0.9         |

| Randbedingung            | $q$ [W/m <sup>2</sup> ] | $\theta$ [°C] | $R$ [(m <sup>2</sup> ·K)/W] | $\varepsilon$ |
|--------------------------|-------------------------|---------------|-----------------------------|---------------|
| Aussenklima              |                         | -14.600       | 0.040                       |               |
| Innen Fenster/Türen      |                         | 20.000        | 0.150                       |               |
| Innen Untere Raumhälfte  |                         | 20.000        | 0.350                       |               |
| Symmetrie/Bauteilschnitt | 0.000                   |               |                             |               |

ISOVER Bautechnik, November 2013

Detailblatt 21-920  
 Dämmung Wand 21-100: 140mm  
 Kriterium Oberflächenkondensat



ISOVER Bautechnik, November 2013