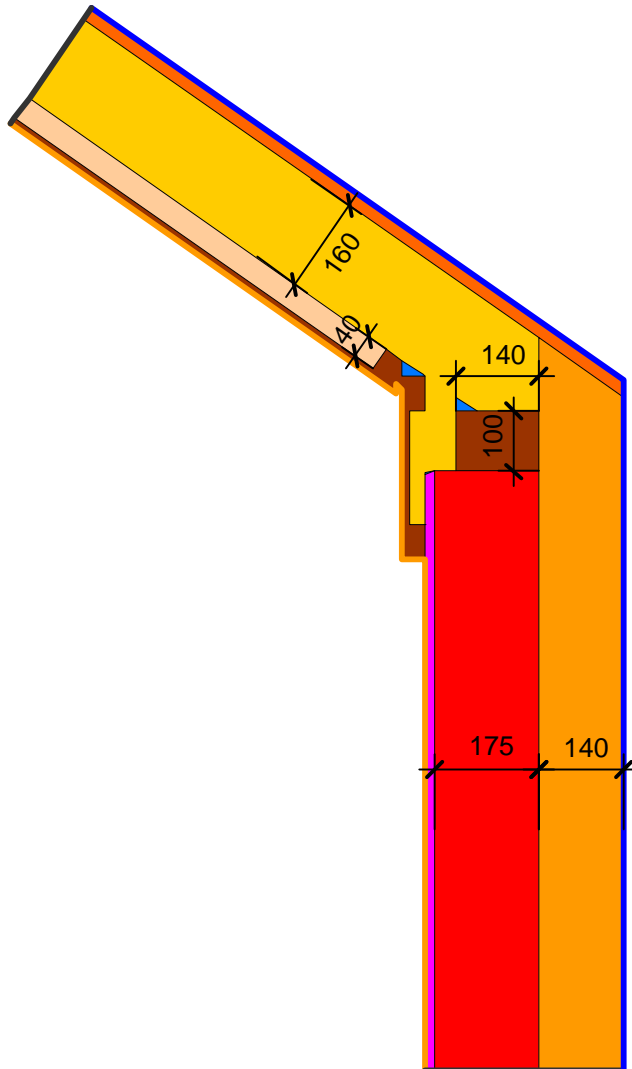


Detailblatt 21-905  
 Dämmung Dach 11-220: 160 + 40mm  
 Dämmung Wand 21-100: 140mm  
 Kriterium Oberflächenkondensat

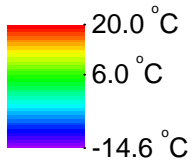
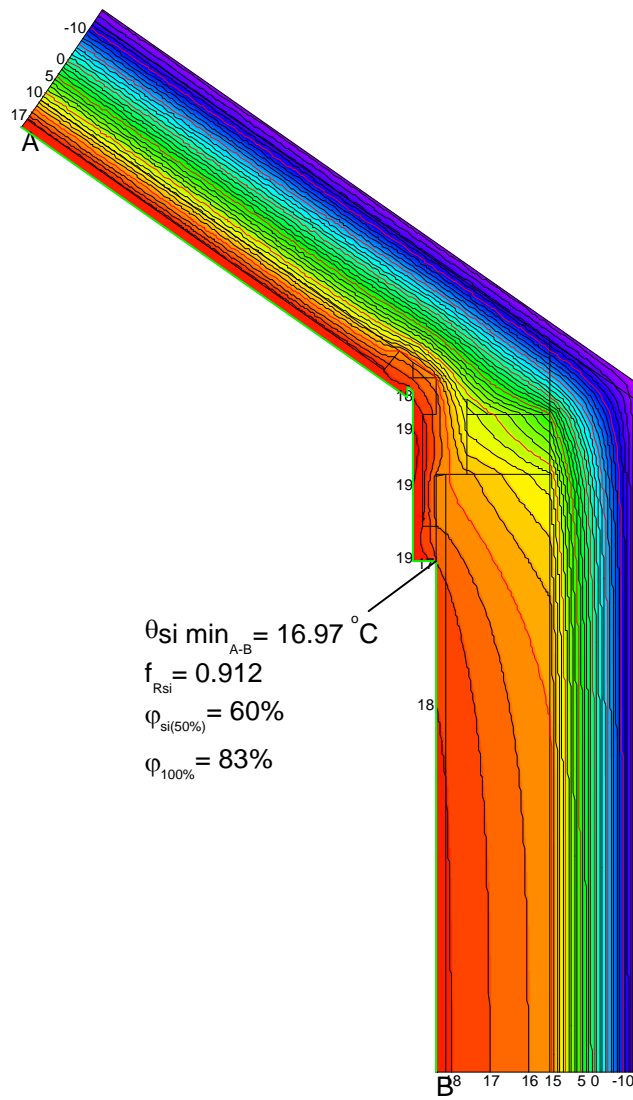


| Material                    | $\lambda$ [W/(m·K)] |
|-----------------------------|---------------------|
| Fichte, Tanne               | 0.140               |
| ISOVER ISOTWIN              | 0.032               |
| ISOVER PHONEIX 032          | 0.032               |
| ISOVER SPARRENPLATTE 032 PR | 0.032               |
| Innenputz                   | 0.700               |
| Isorooft Natur              | 0.047               |
| Modulbackstein Einstein     | 0.440               |
| Unbelüftete Hohlräume       | Eps=0.9/0.9         |

| Randbedingung            | $q$ [W/m <sup>2</sup> ] | $\theta$ [°C] | $R$ [(m <sup>2</sup> ·K)/W] | $\epsilon$ |
|--------------------------|-------------------------|---------------|-----------------------------|------------|
| Aussenklima              | -14.600                 |               | 0.040                       |            |
| Innen Obere Raumhälfte   | 20.000                  |               | 0.250                       |            |
| Symmetrie/Bauteilschnitt | 0.000                   |               |                             |            |

ISOVER Bautechnik, November 2011

Detailblatt 21-905  
 Dämmung Dach 11-220: 160 + 40mm  
 Dämmung Wand 21-100: 140mm  
 Kriterium Oberflächenkondensat



ISOVER Bautechnik, November 2011