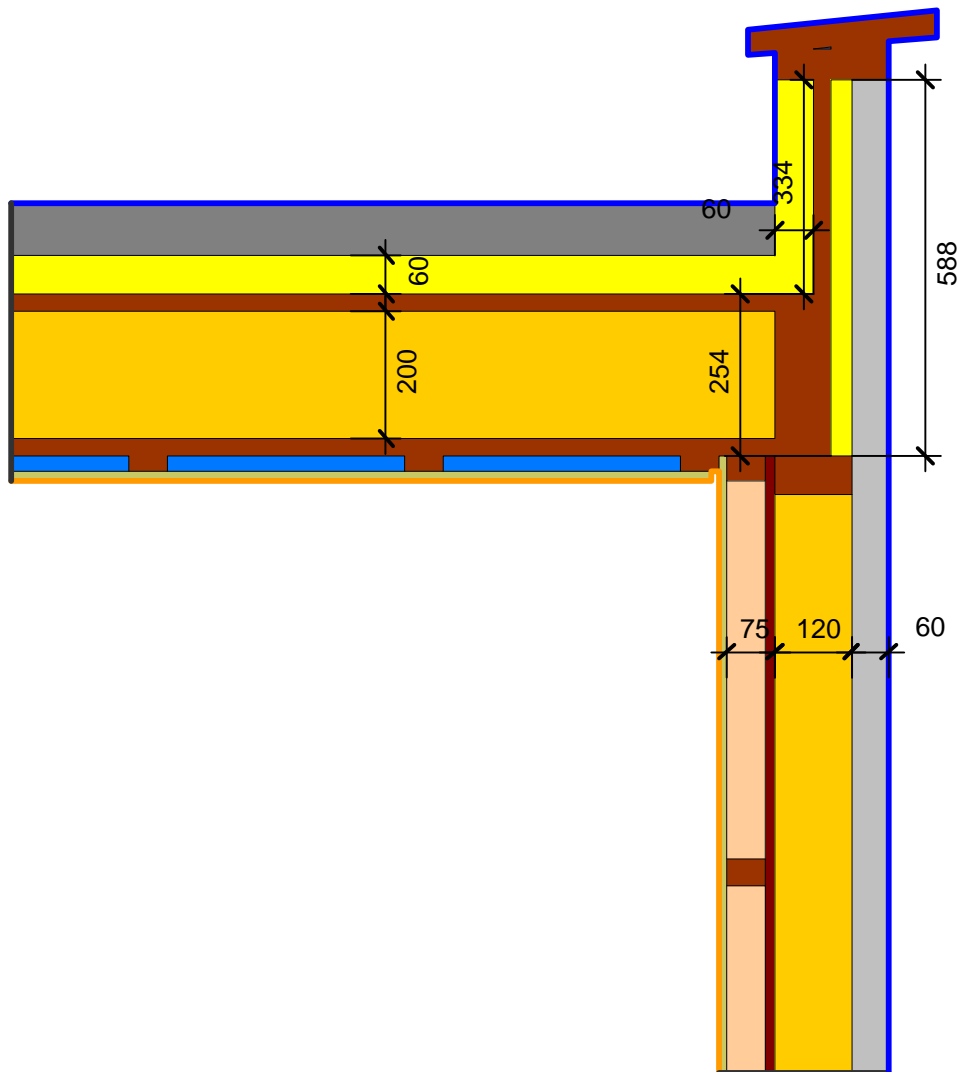


Detailblatt 13-905  
 Dämmung Dach 13-500: 60 + 200mm  
 Dämmung Wand 24-110: 60 + 120 + 60mm  
 Kriterium Oberflächenkondensat

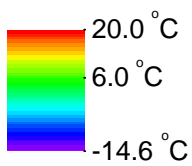
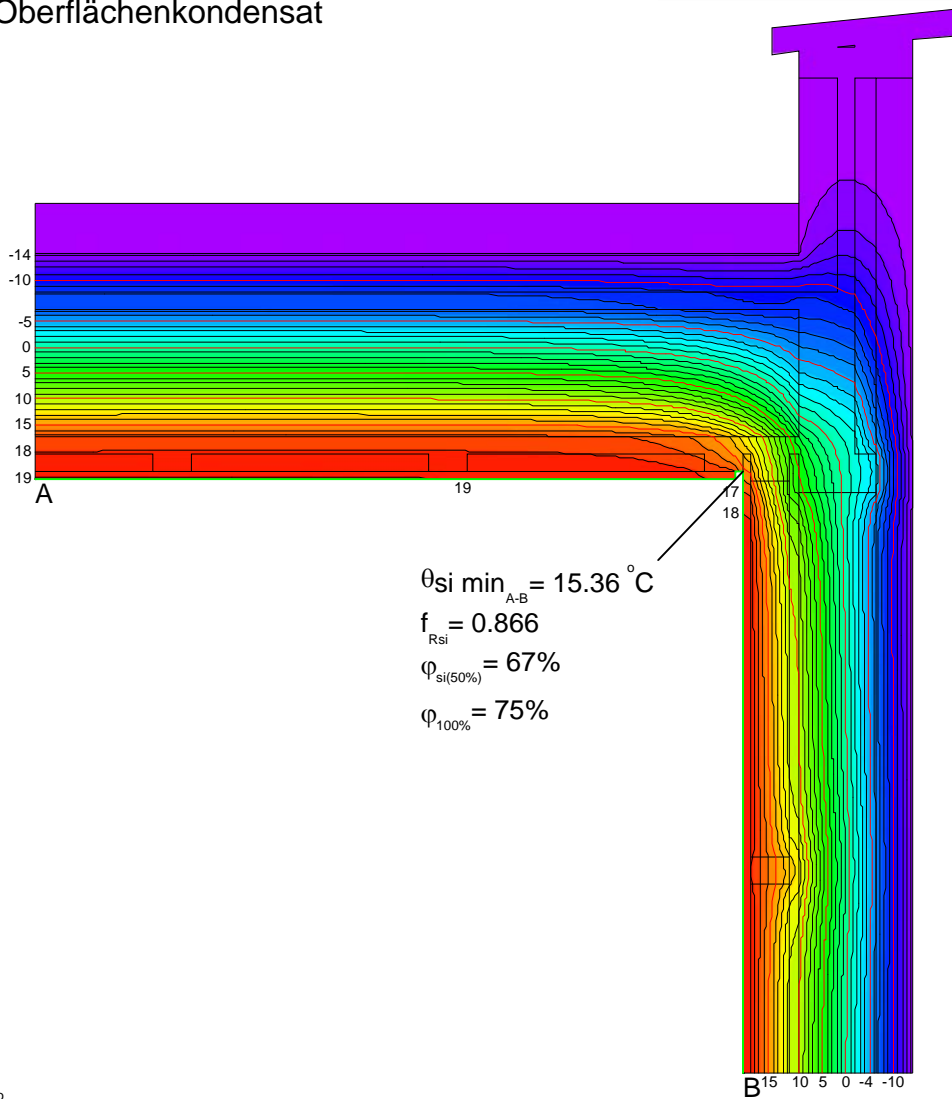


Material	$\lambda$ [W/(m·K)]
Fichte, Tanne	0.140
Gips	0.400
Holzspanplatte 600	0.110
ISOVER ISOFLAT	0.038
ISOVER ISOPONTE	0.032
ISOVER ISOTWIN	0.032
ISOVER PB M 035	0.035
ISOVER SPARRENPLATTE 032 PR	0.032
Sand und Kies	2.000
Unbelüftete Hohlräume	Eps=0.9/0.9

Randbedingung	$q$ [W/m <sup>2</sup> ]	$\theta$ [°C]	$R$ [(m <sup>2</sup> ·K)/W]	$\epsilon$
Aussenklima		-14.600	0.040	
Innen Obere Raumhälfte		20.000	0.250	
Symmetrie/Bauteilschnitt	0.000			

ISOVER Bautechnik, November 2013

Detailblatt 13-905  
 Dämmung Dach 13-500: 60 + 200mm  
 Dämmung Wand 24-110: 60 + 120 + 60mm  
 Kriterium Oberflächenkondensat



ISOVER Bautechnik, November 2013