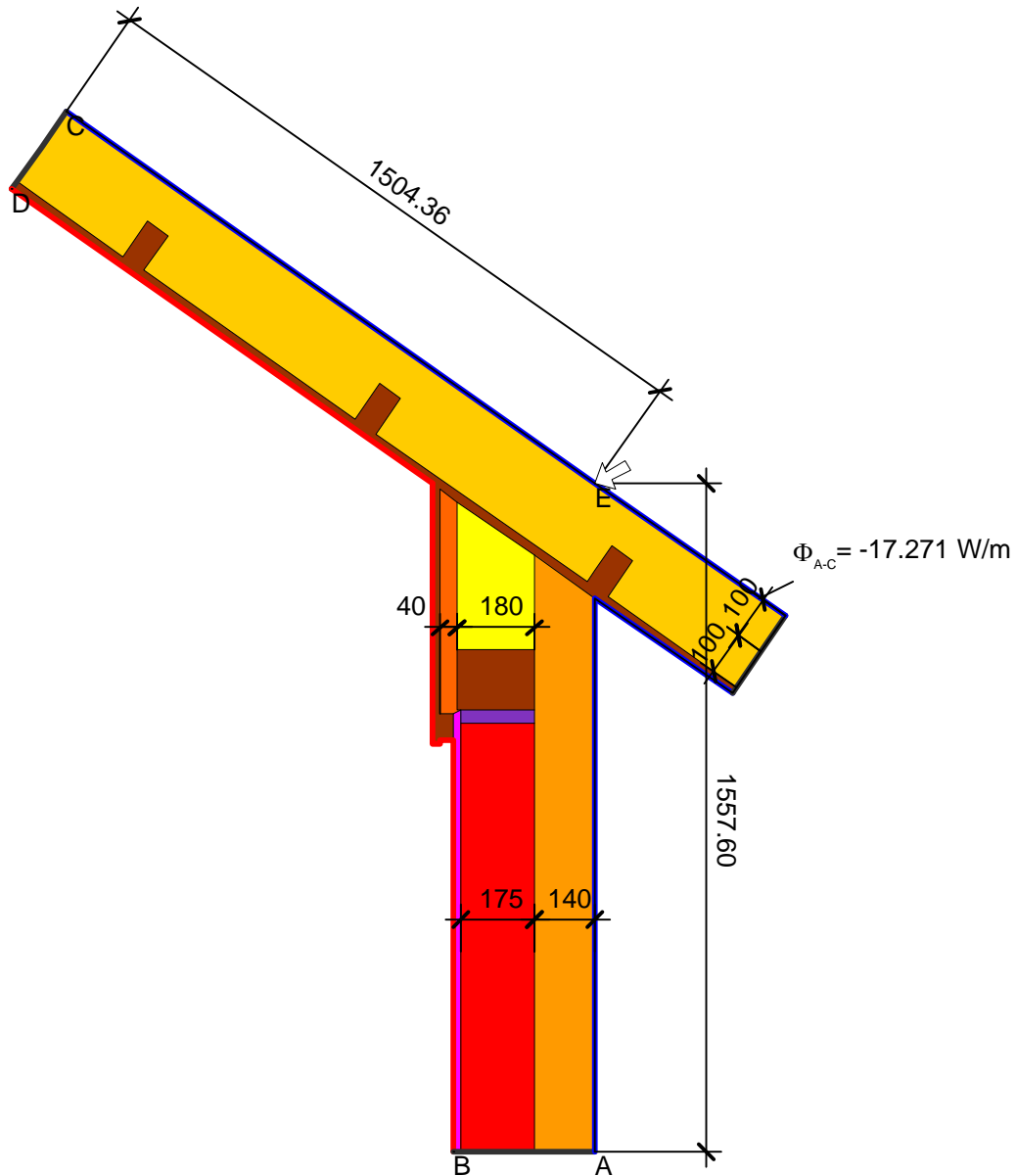


Detailblatt 12-950
 Dämmung Dach 12-300: 100 + 100mm
 Dämmung Wand 21-100: 140mm
 Psi-Wert

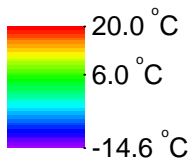
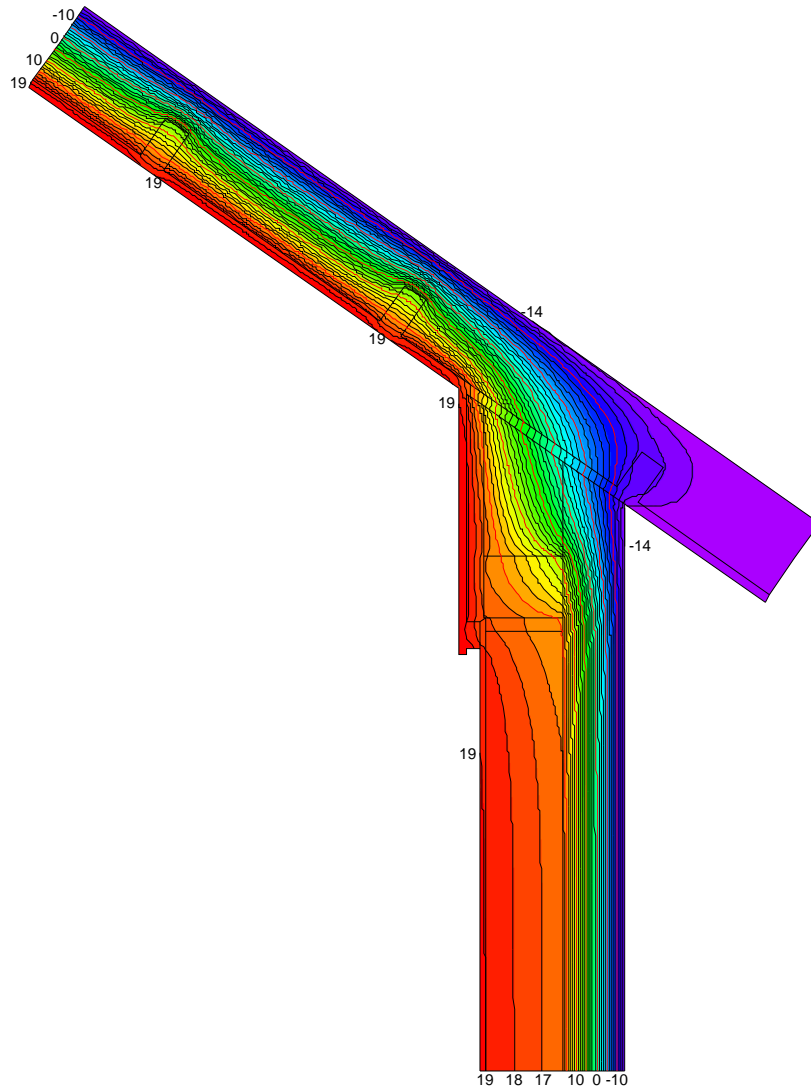


$$\psi_{A-E-C} = \frac{\Phi}{\Delta T} - U_1 \cdot b_1 - U_2 \cdot b_2 = \frac{17.271}{34.600} - 0.200 \cdot 1.558 - 0.190 \cdot 1.504 = -0.10 \text{ W}/(\text{m} \cdot \text{K})$$

Material	λ [W/(m·K)]	Randbedingung	q [W/m ²]	θ [°C]	R [(m ² ·K)/W]	ε
Fichte, Tanne	0.140	Aussen Standard	-14.600	20.000	0.040	
ISOVER ISOLENE P	0.032	Aussen stark belüftet	-14.600	20.000	0.130	
ISOVER ISOTHERM 035	0.035	Innen Standard	20.000	20.000	0.130	
ISOVER PB M 032	0.032	Innen Wärmestrom aufwärts	20.000	20.000	0.100	
ISOVER PHONEIX 032	0.032	Symmetrie/Bauteilschnitt	0.000			
Innenputz	0.700					
Modulbackstein Einstein	0.440					
Zementmörtel (1)	1.400					

ISOVER Bautechnik, November 2013

Detailblatt 12-950
Dämmung Dach 12-300: 100 + 100mm
Dämmung Wand 21-100: 140mm
Psi-Wert



ISOVER Bautechnik, November 2013